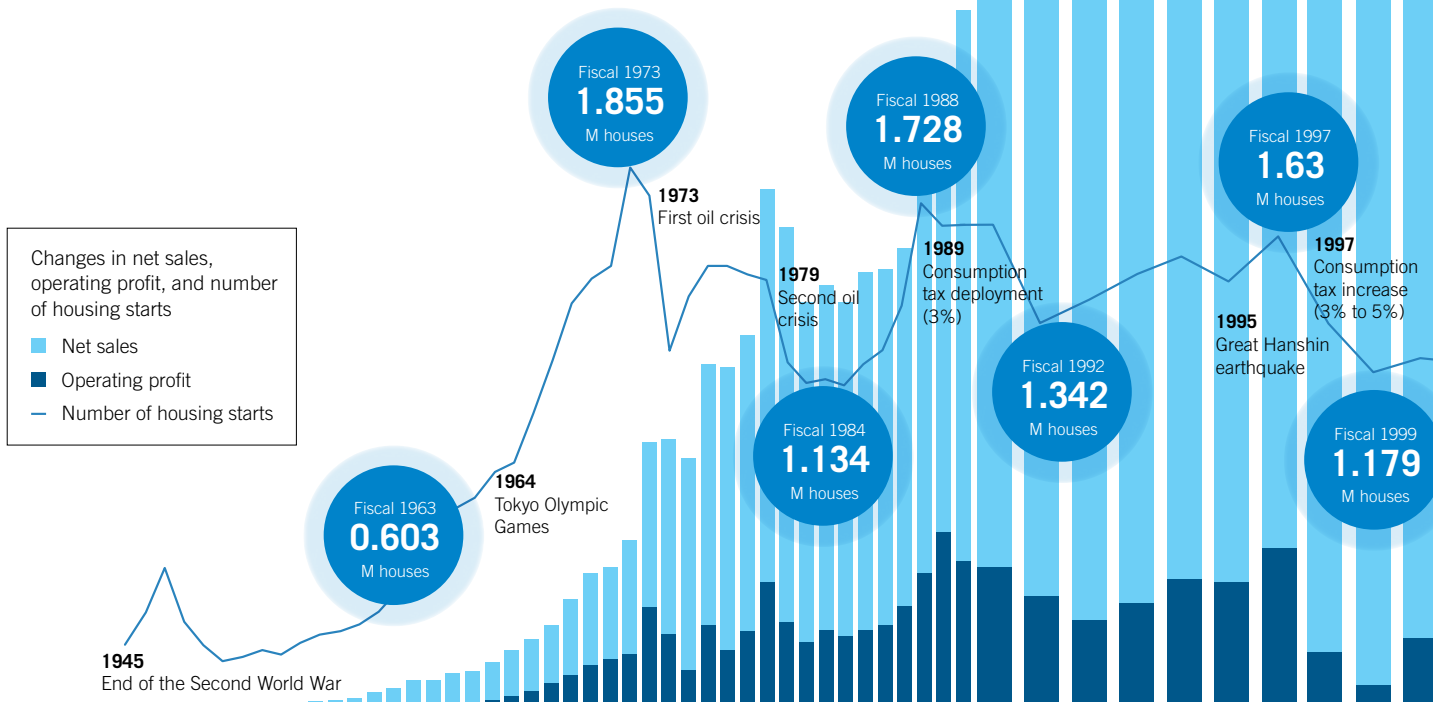


Historical Development of Value Creation

Ever since foundation, The Daiken Group has been developing a wide variety of products to help customer's daily life through our technological innovations which always meets social issues and needs.

The Group effectively uses all the strengths acquired in our history and aims to grow into a housing material manufacturer that becomes an all-embracing company for building materials and thus creates new value.



Foundation		Expansion		Growing	
1941 Itochu Corporation, Marubeni Shoten, Ltd., and Kishimoto Shoten have combined to form Sanko Kabushiki Kaisha	1958 Built Okayama plant and started manufacturing Insulation board	1973 Started manufacturing Boards for tatami mats at the Okayama plant	1977 Expanded insulation board business Built Takahagi plant	1996 Implemented Tatami facing production lines at the Okayama plant	1996 Implemented the Dai-Lite production lines at the Okayama plant
1944 Sanko Kabushiki Kaisha, Kureha Boseki Kabushiki Kaisha, and Daido Boeki combined to form Daiken Co., Ltd.	1964 Started manufacturing Dai-Lotone at the Okayama plant	1967 Changed the company name to DAIKEN CORPORATION		1994 Established Daiken Sarawak Sdn Bhd. in Malaysia for MDF manufacture	
1945 Founded Daiken Mokuzaei Kogyo Co., Ltd., acquiring all the business of the Forestry Department at Daiken Sangyo Co., Ltd.	1954 Established Nagoya plant for manufacturing special plywood	1970 Started manufacturing WPC flooring at the Nagoya plant	1987 Expanded flooring business Established Mie Daiken Co., Ltd. (currently, Mie plant)	1989 Started manufacturing housing products, such as doors and stairs, at the Inami plant	1995 Built interior doors production line at the Inami plant
		1969 Established Interior Projects Department	1984 Established Daiken Engineering Corporation for interior projects		1999 Purchased an interior projects company, Koukou Sangyo Corporation
		1970 Established Toyama plant for manufacturing special plywood	1982 Started housing equipment business, including kitchen facilities	1989 Started manufacturing of cladding at the Takahagi plant	



Technological development of adhesives gives special plywood water resistance and durability



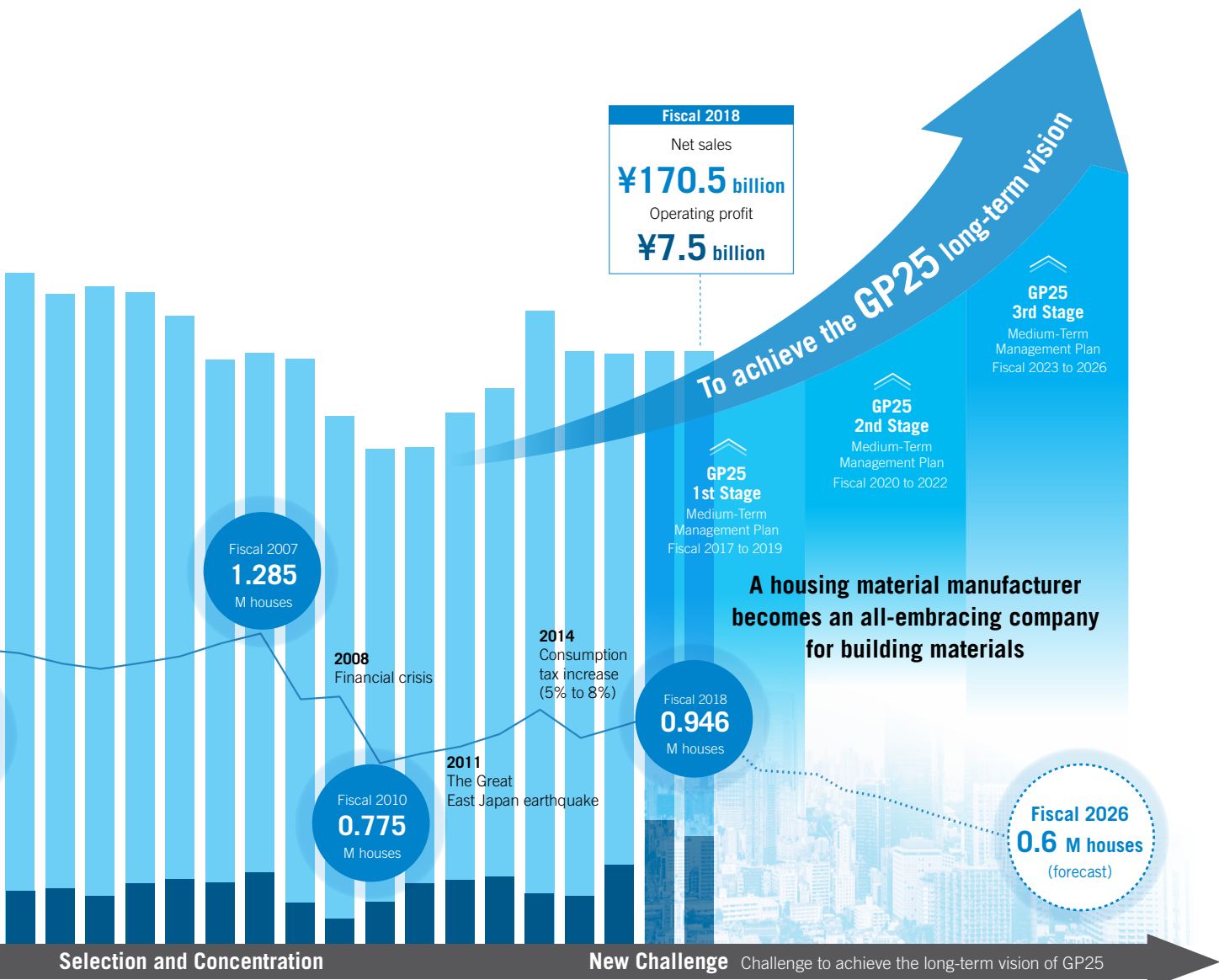
Insulation board using residual wood offcuts and construction waste



Dai-Lotone, non-combustible ceiling materials using rock wool, a byproduct from iron manufacturing



WPC flooring with durability to overcome the weakness of wood

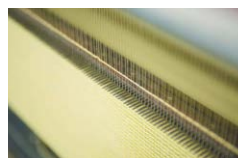


2004 Transferred the insulation board business from Nichiha Corporation	2007 Expanded insulation board business Purchased Kaihatsu Board Co., Ltd.	2018 Implemented the production line for Dai-Lite deeply embossed non-combustible wall material at the Okayama plant
2005 Purchased MDF manufacturer in Malaysia and established Daiken Miri Sdn Bhd.	2009 Purchased MDF plant in New Zealand and established Daiken New Zealand Limited	2018 Purchased MDF manufacturer in New Zealand and established Daiken Southland Limited
2002 Alliance with TOTO Ltd. and YKK AP Inc. for remodeling business	2002 Established Daiken Industries (Ningbo) Corporation	2010 Alliance with Panasonic Electric Works (currently, Panasonic Corporation) in production and procurement
2009 Integrated flooring business of the Nagoya plant in the Mie plant	2010 Alliance with Panasonic Electric Works (currently, Panasonic Corporation) in production and procurement	2015 Established interior doors manufacturing company PT. Daiken Dharma Indonesia in Indonesia
2000 Integrated the Interior Projects Department into Daiken Engineering Corporation	2010 Purchased an interior projects company, Sankei Corporation	2016 Purchased an apartment renovation company, Pac System Co., Ltd.
2000 Withdrawal from roof materials business Withdrawal from housing equipment business	2004 Transferred the cladding business to Nichiha Corporation	2007 Ended plywood production at the Toyama plant

- [Daiken's strengths]**
- Capabilities to develop unique industrial materials
 - Capability to develop building materials with high added value and capability to propose total plans for interior spaces
 - Capabilities to perform installation work by making use of the functions of building materials



MDF using residual wood off-cuts as the main raw material



Tatami facing with superior maintenance using machine-made Japanese Washi paper



Dai-Lite, an inorganic material incorporating the unused resource Shirasu (volcanic ash) and rock wool



Interior materials, including a door that anyone can use safely with security for health and comfort